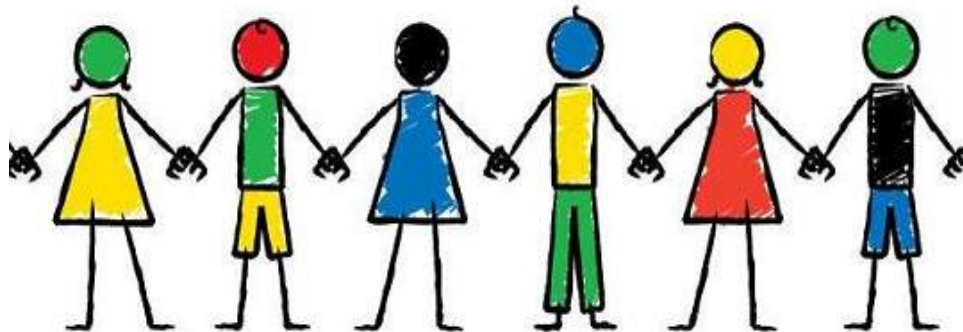


SENSORY GAMES



Blind Man's Staff -

You will need:

- 6 or more players
- A blindfold
- A 30cm ruler (pointing staff)

How to play:

- Select 1 player to be the 'blind man', blindfold them, lead them to the centre of the room and turn them around 3 times. This makes the blind man dizzy and unsure of where they are facing.
- All of the other players walk around in a circle, close enough so that the pointing stick is just out of reach.
- When the blind man points the stick, the players stop walking. The blind man says 'who's there'? The person closest to the end of the stick disguising their voice, answers, 'It's me'.
- If the blind man can identify the player, that player becomes the next blind man.
- If the blind man doesn't identify the player, the game continues until the blind man correctly identifies another player.

